



MOUNTAIN ACCORD

Environment System

Group Meeting #4

June 24, 2014



Meeting #4 Outcomes



1. Member Poll on Vision and Goals
2. Discussion of Metrics

Meeting #4 Agenda



1. Scenario Planning: Remaining Steps
2. Summary of other System Groups
3. Vision Statements: Discussion and Polling
4. Goals: Discussion and Polling
5. Metrics: Discussion
6. Map Exercise
7. Action Items and Closing

Slide 3

CW1

May need to adjust for each group and slide arrangement accordingly

Claire Woodman, 6/18/2014

Remaining Steps



MOUNTAIN ACCORD

Vision, Goals and Metrics (June, July)

Idealized Systems (Aug, Sept, Oct)

Design Features

Report Cards

Combined Scenarios and Preferred Scenario (Nov, Dec, Jan)

Process Overview

VISION GOALS METRICS

*Future Vision
Desired Outcomes*

DESIGN IDEALIZED SYSTEM

*Design Features
Map-building charrettes
Apply metrics*

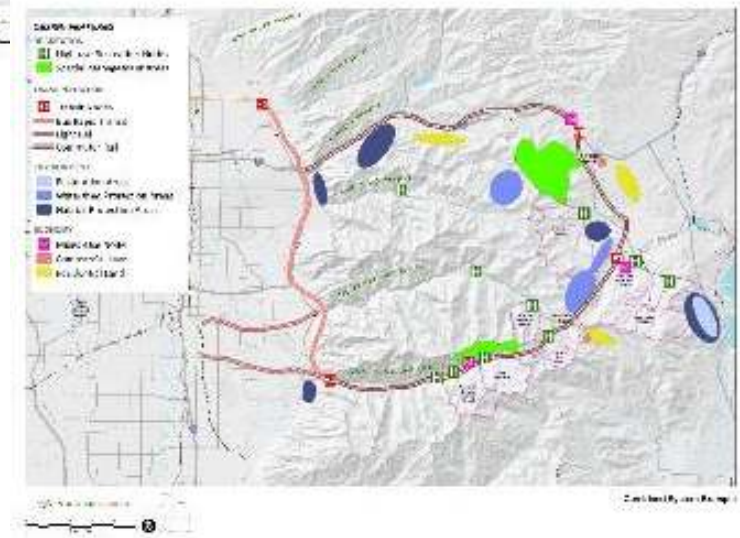
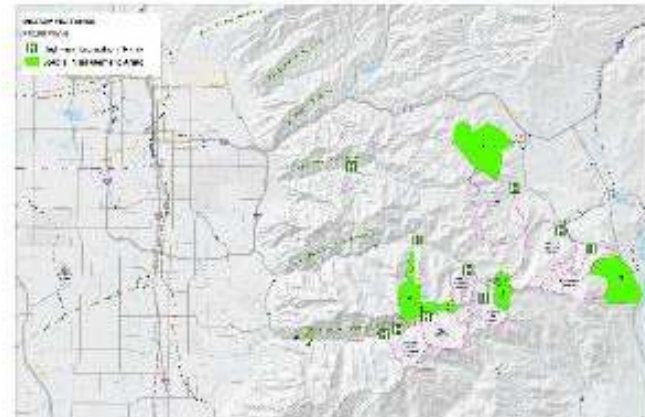
COMBINED & PREFERRED SCENARIO

*Combine systems
Apply Metrics
Refine, Review
Select*

Recreation



Goal: Provide recreation opportunities for an increasing number of users while maintaining backcountry experiences

Metric	Success Target	Existing Conditions	Idealized Scenario
Number of high-use recreation nodes	4-nodes	1-node	5-nodes
Acres of land under social management	1,000 acres	500 acres	1,100 acres

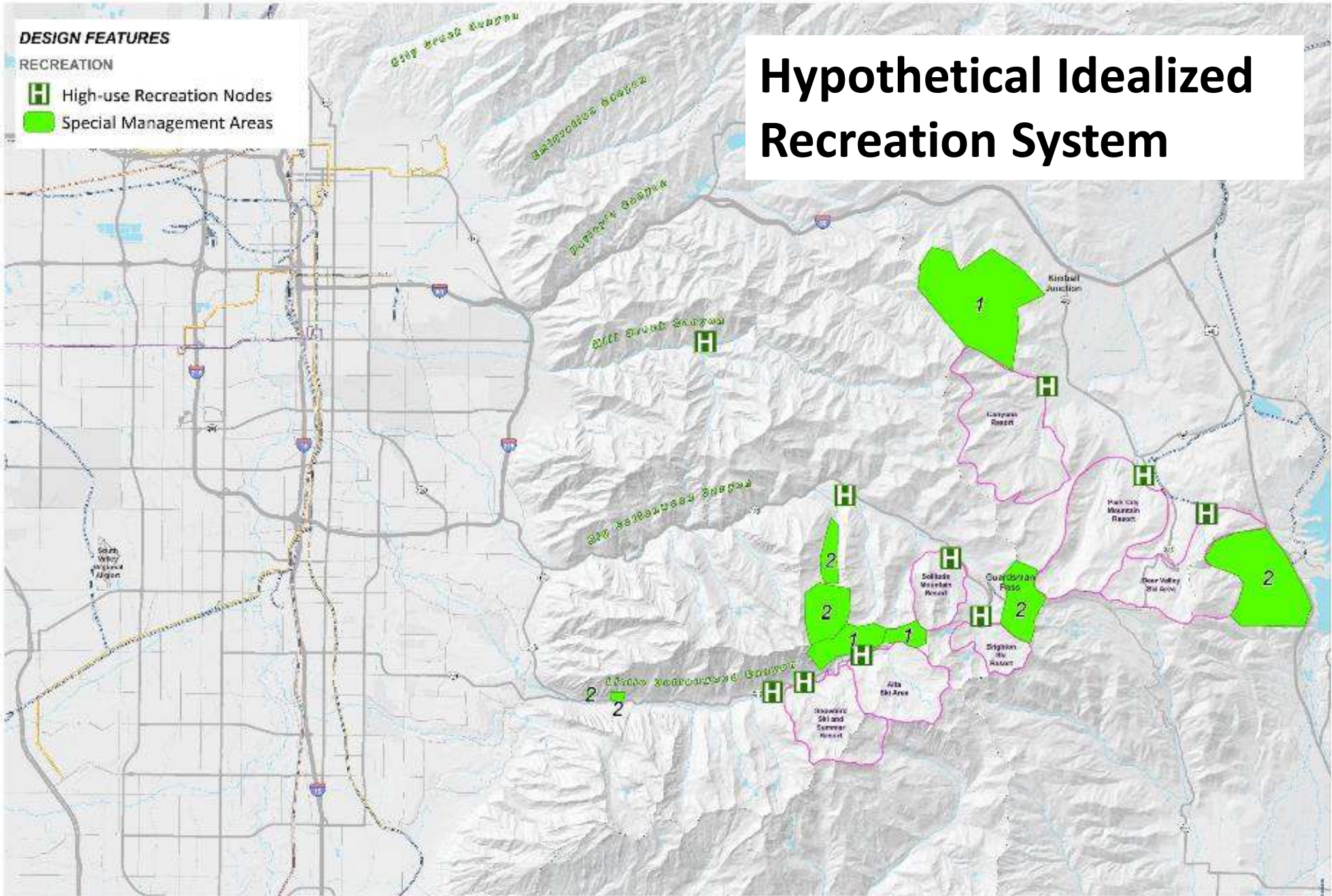


DESIGN FEATURES

RECREATION

-  High-use Recreation Nodes
-  Special Management Areas

Hypothetical Idealized Recreation System



Design Features - Environment

Menu of concepts/actions to build System

- Large scale
- Spatial actions and policy actions
- Building blocks for “Idealized System”

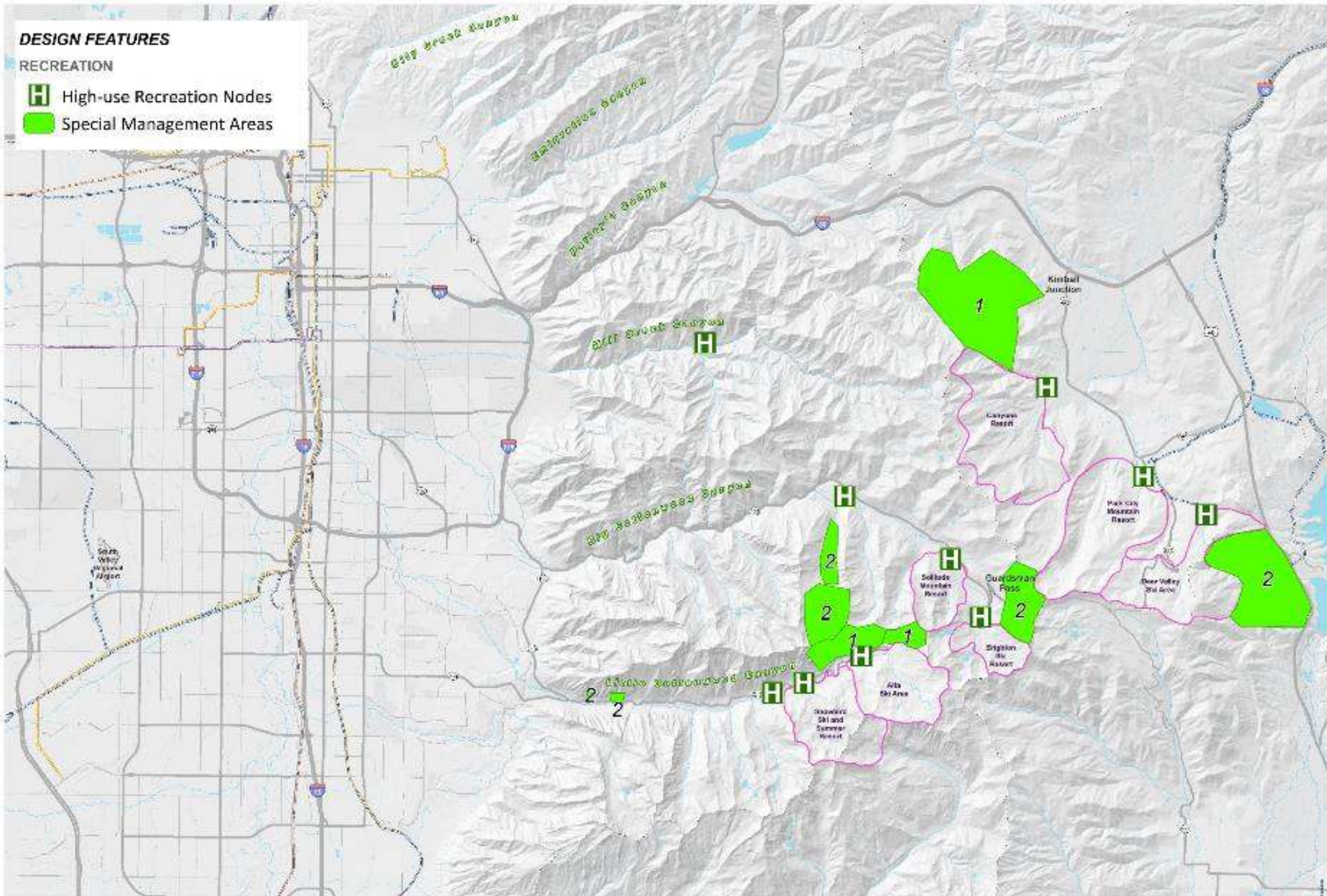
Environment Examples

- Restoration areas (spatial) **H**
- Watershed recharge protection areas (spatial)
- Funding source to purchase land for watershed protection (policy)

DESIGN FEATURES

RECREATION

-  High-use Recreation Nodes
-  Special Management Areas



Example Report Card



MOUNTAIN ACCORD

Recreation

Goal: Provide recreation opportunities for an increasing number of users while maintaining backcountry experiences

Metric	Existing Conditions	Target	Idealized System A
<i>Number of high-use recreation nodes</i>	<i>1 node</i>	<i>4 nodes</i>	<i>4 nodes</i>
<i>Acres of land under special management</i>	<i>500 acres</i>	<i>1,000 acres</i>	<i>1,100 acres</i>

DESIGN FEATURES

RECREATION

- High-use Recreation Nodes
- Special Management Areas

TRANSPORTATION

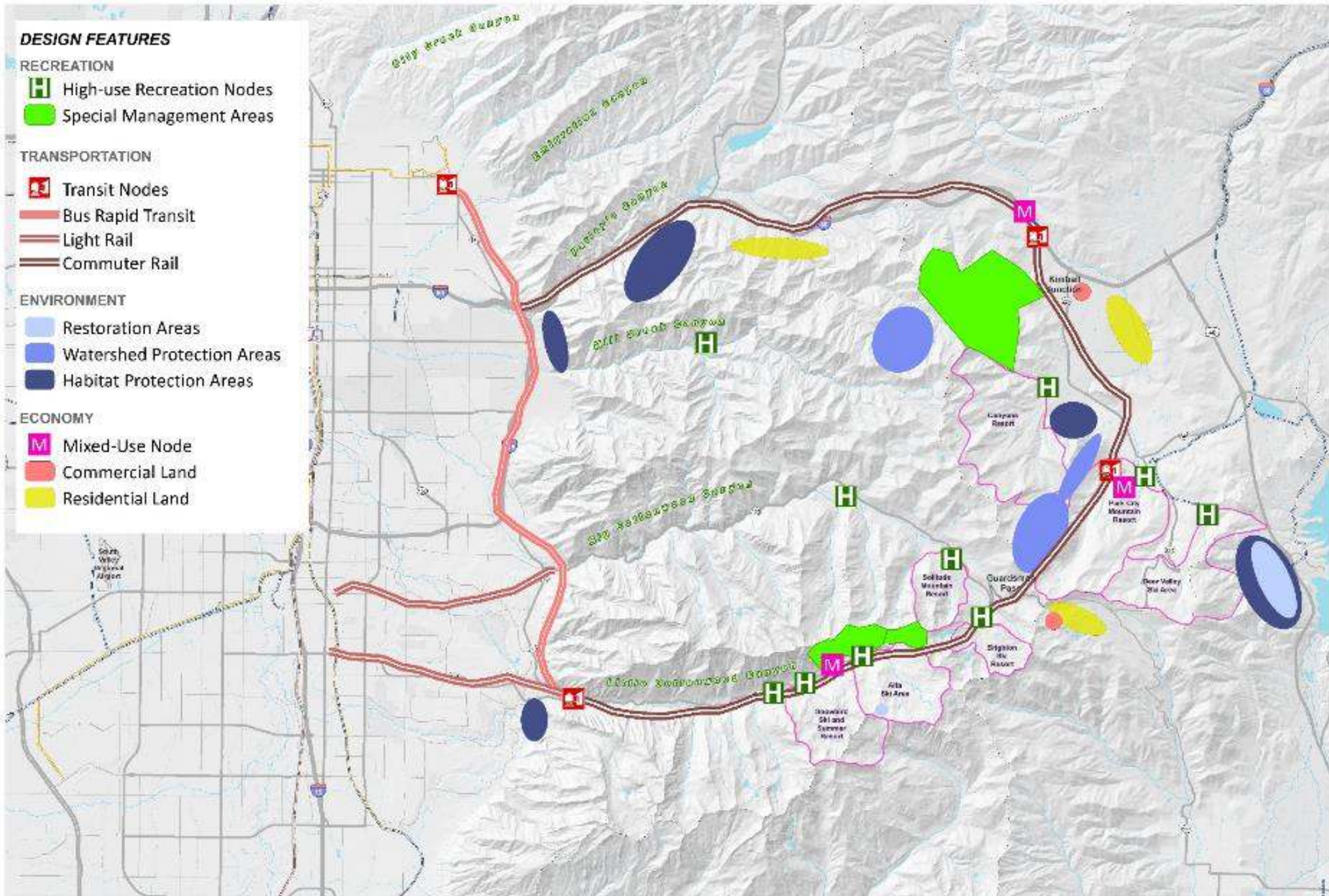
- Transit Nodes
- Bus Rapid Transit
- Light Rail
- Commuter Rail

ENVIRONMENT

- Restoration Areas
- Watershed Protection Areas
- Habitat Protection Areas

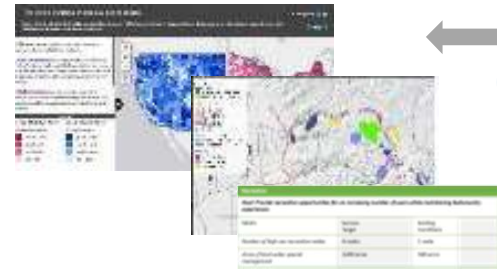
ECONOMY

- Mixed-Use Node
- Commercial Land
- Residential Land



Developing Combined and Preferred Scenarios

2-Day Workshop and charrette: range of 4 Combined Scenarios



**DEVELOP
COMBINED
SCENARIOS
(early Nov)**

- Tech Leads
- Co-chairs
- Coord Comm
- Mgt Team

*Review Combined Scenarios.
Make refinements.*



**REFINE
SCENARIOS
(Nov-Dec)**

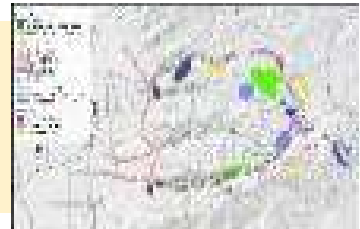
- Stakeholder Group
- Steering Committee
- Executive Board

*30 day public review.
Jan public open houses.
2 Exec sessions.
Negotiation.*



**BROAD
REVIEW
AND INPUT
(Dec-Jan)**

- Public
- Other stakeholders
- Exec Board



**PREFERRED
SCENARIO
(Jan 26)**

- Exec Board adopts a Preferred Scenario

Vision



MOUNTAIN ACCORD

Vision Statement 1

The Central Wasatch is characterized by a natural environment—comprised of air, land, water, and ecosystems—that are and will continue to be preserved, protected, and restored such that they are more functional, resilient, and aesthetically pleasing for current and future generations.

Vision Statement 2

The Central Wasatch community is inspired and empowered to take responsibility as stewards to preserve, protect, and enhance the watershed and ecological health and natural beauty of the Wasatch through sustainable management and development of the land, air, and water resources such that we succeed in sustaining a healthy and welcoming environment for current and future generations.

Vision Statement 3

The Central Wasatch is a mountainous landscape that is preserved and protected for a range of abundant conservation values such as agriculture, public access and recreation, and ecosystem and watershed health for current and future generations. Utilizing these conservation values has ensured the preservation, restoration, management and stewardship of these lands, underscoring our shared connection to and respect of the land, air, water, and ecosystems and the amenities they provide.

Vision Statement 4

The Central Wasatch is a healthy and resilient system that supports both people and nature. A community of inspired stewards continues a tradition of protection and restoration to benefit future generations.

Vision



MOUNTAIN ACCORD

Vision Statement 1

The Central Wasatch is characterized by a natural environment—comprised of air, land, water, and ecosystems—that are and will continue to be preserved, protected, and restored such that they are more functional, resilient, and aesthetically pleasing for current and future generations.

Vision



Vision Statement 2

The Central Wasatch community is inspired and empowered to take responsibility as stewards to preserve, protect, and enhance the watershed and ecological health and natural beauty of the Wasatch through sustainable management and development of the land, air, and water resources such that we succeed in sustaining a healthy and welcoming environment for current and future generations.

Vision



MOUNTAIN ACCORD

Vision Statement 3

The Central Wasatch is a mountainous landscape that is preserved and protected for a range of abundant conservation values such as agriculture, public access and recreation, and ecosystem and watershed health for current and future generations. Utilizing these conservation values has ensured the preservation, restoration, management and stewardship of these lands, underscoring our shared connection to and respect of the land, air, water, and ecosystems and the amenities they provide.

Vision



MOUNTAIN ACCORD

Vision Statement 4

The Central Wasatch is a healthy and resilient system that supports both people and nature. A community of inspired stewards continues a tradition of protection and restoration to benefit future generations.

Test Poll



What is your favorite color?

1. Blue
2. Green
3. Red
4. Yellow
5. White

System Group

Vision Poll



MOUNTAIN ACCORD

This Vision statement articulates the shared description of the desired long-term future state of the X system.

1. Concur
2. Concur with minor point of contention
3. Disagree with outcome but consent to move forward
4. Dissent
5. Waive or Abstain

Goals



Goal 1: Protect, maintain and improve watershed health, water supply, and water quality.

Goal 2: Maintain and improve air quality and reduce greenhouse gas emissions for protection of public health, environmental health, and scenic visibility.

Goal 3: Maintain and restore aquatic and terrestrial ecosystems.

Goal 4: Preserve new lands, restore existing lands.

Goal 5: Legal, regulatory, financial and governance structures provide long-term and sustainable support for achieving the environment system goals

System Group



MOUNTAIN ACCORD

Goals Poll

These Goals state the specific desired outcomes of the X System and if achieved represent the best ways to idealize the Central Wasatch and advance the System Group Vision.

1. Concur
2. Concur with minor point of contention
3. Disagree with outcome but consent to move forward
4. Dissent
5. Waive or Abstain

Metrics



MOUNTAIN ACCORD

Goal 1: Protect, maintain and improve watershed health, water supply, and water quality.

Metric 1: *The degree of impairment to of high quality areas and improvement of low quality areas using watershed assessment condition and functionality indices (could be different for Wasatch Front and Wasatch Back)*

Metric 2: *Protect existing and future water supply sources (could include surface and groundwater; e.g., infiltration galleries, reservoirs, etc.)*

Metrics



Goal 2: Maintain and improve air quality and reduce greenhouse gas emissions for protection of public health, environmental health, and scenic visibility.

Metric 1: Reduction in vehicle miles traveled in project area (compared to existing condition)

Metric 2: Net reduction in greenhouse gas emissions

Metrics



Goal 3: Maintain and restore aquatic and terrestrial ecosystems.

Metric 1: (Terrestrial) Amount of protection/disturbance allowed in core conservation areas

Metric 2: (Aquatic) Percent of aquatic system (streams and wetlands) in “good” condition

Metrics



Goal 4: Preserve new lands, restore existing lands.

Metric 1: New acres of land with conservation values (watershed, habitat connectivity, viewshed, etc.)

Metric 2: Restored acres of land with conservation values (watershed, habitat connectivity, viewshed, etc.)

Metrics



MOUNTAIN ACCORD

Goal 5: Legal, regulatory, financial and governance structures provide long-term and sustainable support for achieving the environment system goals

Metric 1: Amount of funding to support adaptive management strategies to protect, maintain and improve environment system

Metric 2: Positive/neutral/negative impact to legal, regulatory and financial structures (e.g., Does proposed action set new precedence re. existing ordinance? Would it result in additional stress to agency resources?)

System Group

Metrics Poll



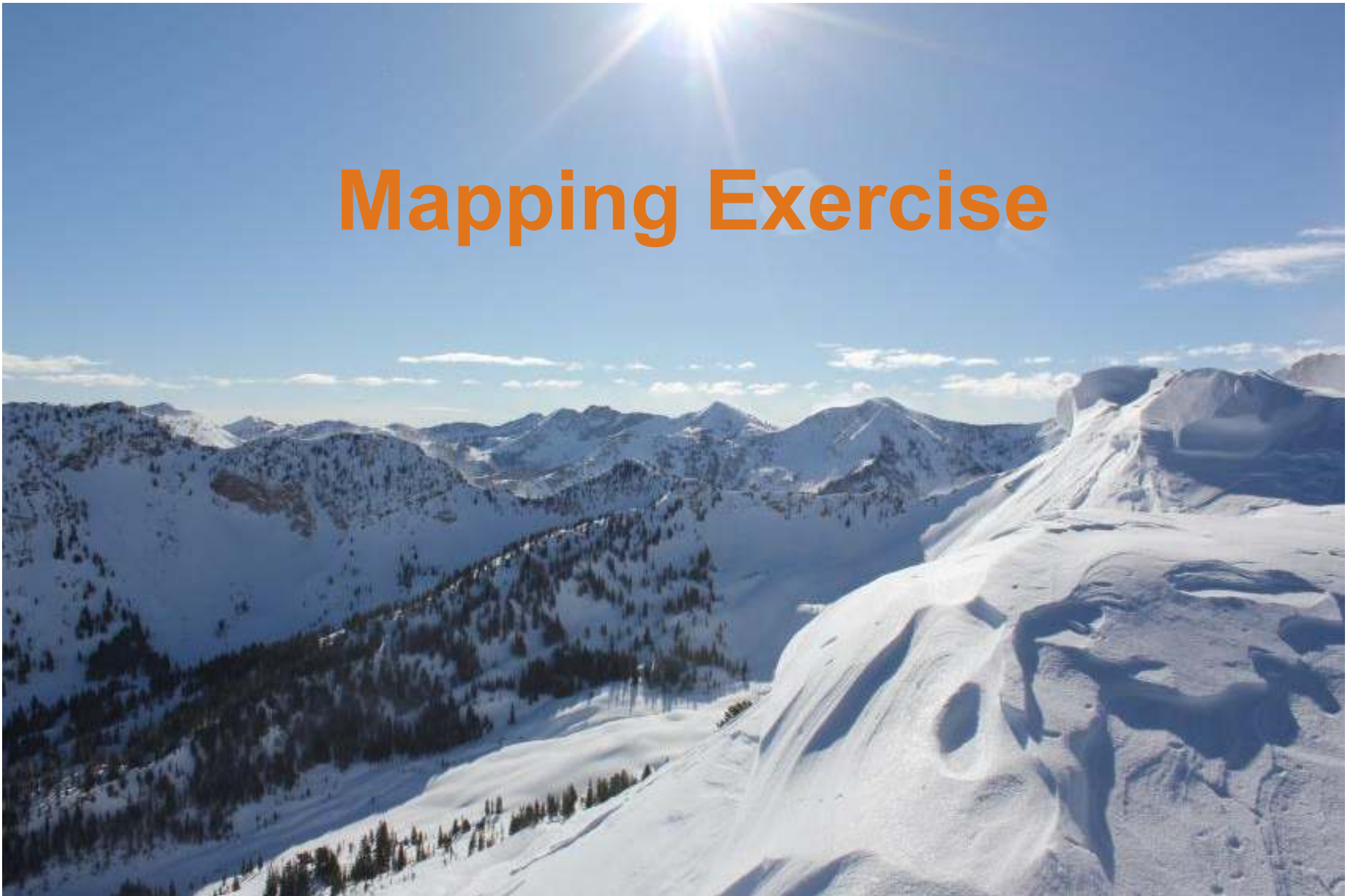
These Metrics represent the best feasible ways to measure success in achieving the goals of the X System in Phase 1 of the Mountain Accord.

1. Concur
2. Concur with minor point of contention
3. Disagree with outcome but consent to move forward
4. Dissent
5. Waive or Abstain



MOUNTAIN ACCORD

Mapping Exercise



Next Meeting (#5)



July 22, 1:30-3:30 pm, location TBD

Outcomes for Meeting #5:

1. Agreement on Metrics
2. Design features for Idealized Systems